



LUDWIG-
MAXIMILIANS-
UNIVERSITÄT
MÜNCHEN

INTERNATIONALE ANGELEGENHEITEN
INTERNATIONAL OFFICE

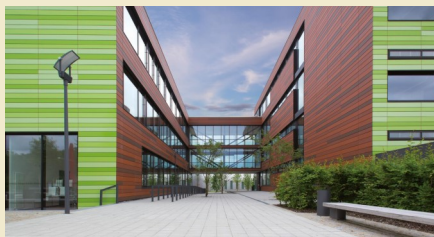


CSC-PROGRAM^{LMU}

The LMU-China Scholarship Council Program



Main building of the University



Biomedical Center Munich (BMC)



Excursion of the CSC Scholars

In 2005 Ludwig-Maximilians-Universität München (LMU Munich) was the first German university to sign an agreement with the China Scholarship Council (CSC). The main goal of this agreement is to enable especially qualified Chinese postgraduates to receive their doctoral degree or to spend a doctoral research period at LMU. The LMU-CSC-Program has since become so well established that it now prevails as a keystone of strategic cooperation between LMU and Chinese Institutes of Higher Education.

The LMU-CSC-Program in numbers

Since the program started in 2006 a total of 369 participants have been accepted for a LMU-CSC-Postgraduate Scholarship at LMU. Of the participants 317 were full time doctoral candidates and 52 took part in a sandwich program. Many of the LMU-CSC-scholars come from top universities in China (e.g. Peking, Zhejiang, Shanghai Jiaotong, Tongji, Renmin, Fudan, Tsinghua and Nanjing University).

Range of Subjects for LMU-CSC-Scholars

All subject areas are available for LMU-CSC-applicants, e.g. Medicine, Human Biology, Pharmacy, Biology, Chemistry, Economics, Business Administration, Law, Psychology, Geosciences, Computer Sciences and Philosophy.

Two types of doctoral scholarships

- **The „Full Doctoral Study-Model“:** With financial support from CSC, three or four years of study and research are completed at LMU. The doctoral title is conferred by LMU.
- **The „Sandwich-Model“:** The first one or two years of the doctoral course are pursued at the Chinese university. Doctoral students then complete one or two years of research at LMU and return to China to finalize their research. The doctoral title is conferred by the Chinese university

Requirements and Selection Procedure

Every year up to 40 candidates are selected from a large number of applicants. The applications are strictly reviewed by a selection committee of CSC and LMU International Office. The most important requirements are:

- Outstanding grades
- Age limit: 35 years; for the two special elite programs in Nanosciences NanoBio Technology and NIM Graduate Program: 27 years
- Language skills: Very good proficiency in English and/or German. Depending on the doctoral thesis, in some subject areas excellent German language skill is required, e.g. in Law, Political Sciences, Communication Sciences, German Studies, Sociology and Philosophy.

Mentoring and Supervision of CSC Scholars at LMU

The International Office of LMU has designed a broad spectrum of services for CSC scholars:

- Organisational support like provision of housing and handling of all formalities
- Four-week orientation course including German language course, intercultural training and excursions
- Monitoring of study and research results through poster sessions supervised by the professors in charge and a member of the LMU executive board
- Promotion and training of academic and presentation skills

Contact

Ludwig-Maximilians-Universität München
International Office
Director of Program: Dr. Stefan Lauterbach
Coordinator of Program: Dr. Dongmei Zhang
Email: csc.international@lmu.de
www.lmu.de/international/CSC
www.university-munich.cn
www.csc.edu.cn